

FOSC DJS 58II

Description

The **Hermetic Fiber Optic Splice Closure DJS-58II** may be used as a cable terminal or a connecting sleeve. The coupler may be installed both in a vertical and in a horizontal position. It consists of the cabinet and distribution board. The door is mounted on hinges. Air-tight closure is fulfilled by 5 galvanised screws and a rubber sealing washer, which protects the fibre-optic splices against the influence of adverse atmospheric conditions. The FOSC is suitable for installation on walls and on poles. The packing of the introduced cables is made by means of air-tight glands. The placement of a switching field makes it possible to swiftly organise and cross fibre-optic connections.

Application

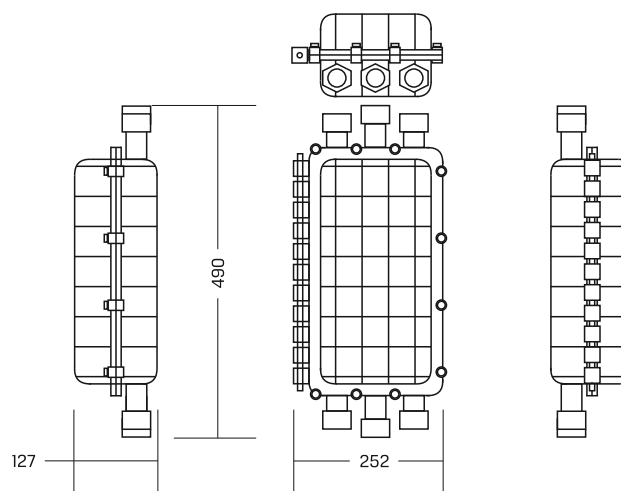
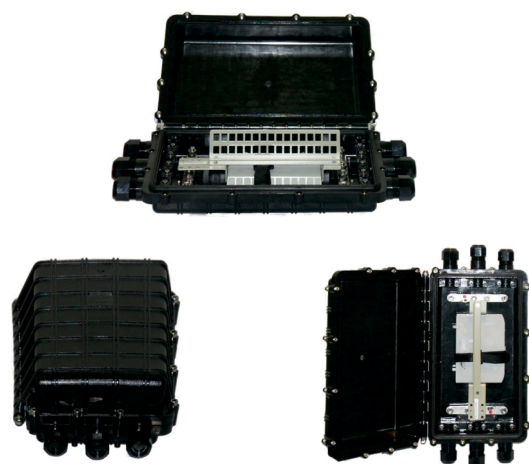
Telecommunication, CATV, Monitoring, Industry, LAN, MAN, WAN, FTTx, PON.

Properties

- » High quality material ABS
- » Airtight closure
- » Cable port: 6 x $\varnothing 22$ mm
- » Core capacity: 72
- » 32xSC/E2000 simplex or 32xST/FC Panel
- » Internal handle cables
- » Size (L x W x H): 490x252x127 mm



Photos and dimensions



How to order

DJS-58II	Hermetic Fiber Optic Splice Closure MINI
FOST D11	DIN24 Splice Tray (24 cores)
FP-58-12SC	DJS-58II 32xSC/E2000 simplex Panel*
FP-58-12ST	DJS-58II 32xST/FC Panel

* Suitable for LC/LX.5/MTRJ duplex SC foot print adapters

Information

- » FOSC holds three FOST D23 DIN24 cassettes
- » FOSC has internal handle cables
- » FOSC is packed in a cardboard box

Standard equipment

- » FOST D23 DIN24 Splice tray (1 pc)
- » 32xSC/E2000 simplex* or 32xST/FC panels (1pc)
- » Key to the M8 bolt (1 pc)
- » Earthing wire $\varnothing 1,5$ mm (0.3 m)
- » Labeling paper (1 pc)
- » Mounting holders (4 pcs)
- » Mounting sling (2 pcs)
- » Nylon tie (8 pcs)
- » Bolt $\varnothing 4 \times 14$ mm (8 pcs)
- » Allen wrenches (6 mm, 4 mm)
- » Flat key 36x26 mm (1 pc)