

Telescopic Fiber Optic Distribution Frame 19" 3U Q-Fiber

Description

Telescopic Fiber Optic Distribution Frame 19" 3U Q-Fiber consists of the box and distribution board. A box with a distribution board installed on telescopes (extension 110%) guarantees the highest comfort of work both at the installation process and during subsequent maintenance works. The front panel is available in the version integrated with the drawer or as a replaceable element. Replaceable plugs make it possible to install various cable conduits. Movable side holders make it possible to withdraw the ODF by 30 mm from the mounting plane.



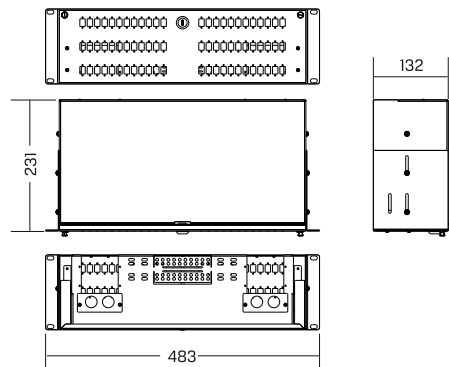
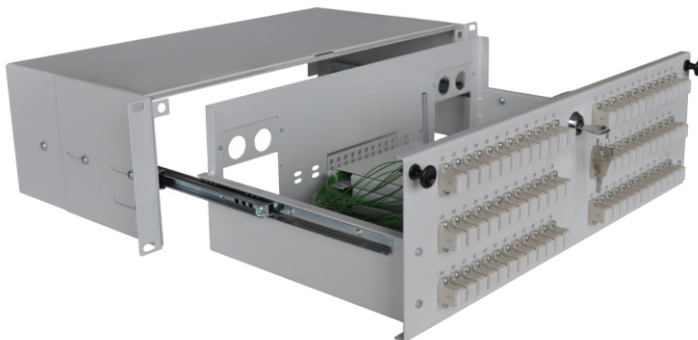
Application

Telecommunication, CATV, Monitoring, Industry, LAN, MAN, WAN.

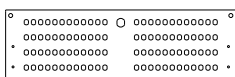
Properties

- Made of 1.2mm steel sheet
- Extension 110% on telescopic rails ,
- Embossing to attach cables inside the box,
- Boltless mounting of adapters,
- Standard color RAL7035 (light grey) glossy, RAL 9005 (black) glossy, other colors on request,
- Dimensions [H x W x D]: 132x483x231 [mm],
- Temporary side handles allow the withdrawal of ODF 19" by 30 mm
- In the rear part 4x open and 4x closed openings for conduits M20x1.5 (ø of the cable 6÷13mm)

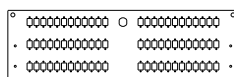
Photos and dimensions



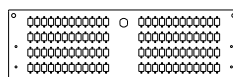
Front panels



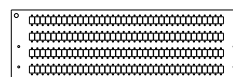
FP193U96ST-T



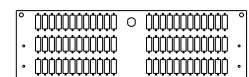
FP193U72CS-T



FP193U96CS-T



FP193U144CS-T



FP193U72CD-T

How to order

- | | |
|----------------|--|
| ODF-19-3U-T* | Telescopic fiber optic distribution frame 19" 2U |
| ODF-19-3U-T-Z* | Telescopic fiber optic distribution frame 19" 2U with a lock |
| PK191U70-T | Cabel overlength guide 70mm |
| FP193U96ST-T | Front Panel 19" 3U 96xST/FC/DIN d-hole |
| FP193U72CS-T | Front Panel 19" 3U 72xSC/E2000 simplex** |
| FP193U96CS-T | Front Panel 19" 3U 96xSC/E2000 simplex** |
| FP193U144CS-T | Front Panel 19" 3U 144xSC/E2000 simplex** |
| FP193U72CD-T | Front Panel 19" 3U 72xSC/ST/FC duplex/ LC quad |

Information

- The ODF houses seven cassettes DIN24 or ten cassettes DIN24 WHITE,
- Product adapted to the FiberQuick system,
- 3U ODF 19" packed in a cardboard box.

* it is possible to order a ODF with an integrated front panel as well as with extended(bolted) adapters

**suitable for LC/LX.5/MTRJ duplex SC foot print adapters

Standard equipment

- Cable gland M20x1.5 (cabel $\varnothing 6\div 13\text{mm}$) (1pc),
- Mounting screw M6 (4 pcs),
- Knurled nut M5 (1 pc),
- Snaps (2 psc).

Additional equipment

- Cable gland M20x1.5 (cabel $\varnothing 6\div 13\text{mm}$),
- Nylon cable tie 80x2.5mm,
- Pigtails,
- Splice trays,
- Adapters.