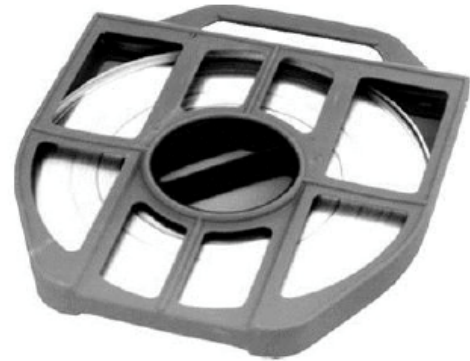


Steel tape TSM

Description

Steel tape TSM is made of stainless steel.



Application

Overhead data communication lines

Properties

Symbol	Width [mm]	Thickness [mm]	Weight [kg]	Package [m]
TSM/10-40	10	0,4	1,8	50
TSM/10-07	10	0,7	3,0	50
TSM/20-04	20	0,4	3,5	50
TSM/20-07	20	0,7	5,9	50

Buckles TSK

Description

Buckles TSM are made of stainless steel.



Properties

Symbol	Width [mm]	Weight [mm]	Package [m]
TSK-10	11	0,35	100
TSK-20	21	0,83	100

How to order

TSM/10-04	Steel tape TSM/10-04
TSM/10-07	Steel tape TSM/10-07
TSM/20-04	Steel tape TSM/20-04
TSM/20-07	Steel tape TSM/20-07
TSK/10	Buckle TSK/10
TSK/20	Buckle TSK/20