

Armoured Patchcords Q-Fiber

Description

Armoured Patchcords Q-Fiber are high-class fiber optic technology products to providing transmission of optical signals in harsh environmental. Mechanical protection for the fiber optic is possible by using high-strength stainless steel tube (pressure on the cable with the force 1000[N / 100mm]). This provides protection against damage caused by being walked on a cable by an adult. The special design also function as protection against rodents. The outer diameter of the cables used for the production of armored patchcords is equivalent to the standard dimensions, it means that it doesn't require more space than standard cable. Armoured patchcords are ideal solution for industrial monitoring and FTTX networks. Each product is customized, which means patchcords can come in any configuration.



Application

Telecommunication, CATV, Monitoring, Industry, LAN, MAN WAN, FTTx, PON.

Properties

- >> Any length (length tolerance):
 - to 0,50m ± 5cm
 - to 5m ± 10cm
 - to 20m ± 20cm
 - Above 20m ± 1%
- >> Cable LSOH
- >> Cable tensile strength 1000N, cable crush 1000 [N/100mm]
- >> Ceramic connector ferrule,
- >> Compliance with the following standards: ZN-05/TP SA-044, ZN-96/TPSA-07, IEC 61754, IEC 61755,
- >> RoHS Compliance.

Polishing standards

- >> FLAT
- >> PC
- >> UPC
- >> APC 8°
- >> APC 9°

Parameters

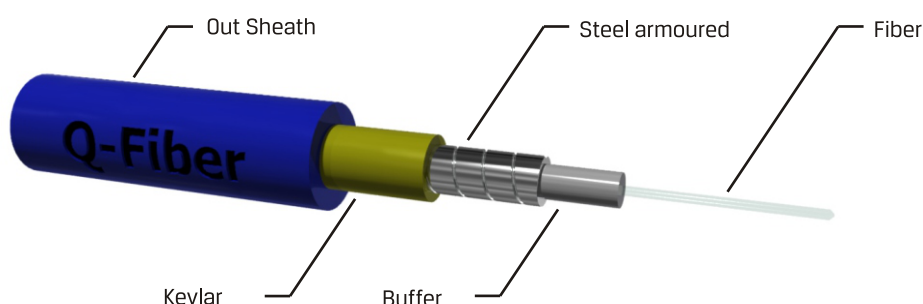
	Ceramic ferrule (SC, ST, FC, LC, MU, E2000, DIN)					
	MM/PC		SM/PC		SM/APC	
	Standard	Premium	Standard	Premium	Standard	Premium
Maximum insertion loss [dB]	≤ 0,6(grade B _M)	≤ 0,25(grade B)	≤ 0,5(grade C)	≤ 0,25(grade B)	≤ 0,5(grade C)	≤ 0,25(grade B)
Typical insertion [dB]	≤ 0,35(grade B _M)	≤ 0,12(grade B)	≤ 0,25(grade C)	≤ 0,12(grade B)	≤ 0,25(grade C)	≤ 0,12(grade B)
Reflection [dB]	≥ 20(grade 2 _M)	≥ 26 (grade 4)	≥ 45 (grade 2)	≥ 45 (grade 2)	≥ 65 (grade 1)	≥ 65 (grade 1)
Radius of curvature [mm]	5 + 30(grade D)	5 + 30(grade C)	5 + 30(grade C)	7 + 25(grade B)	5 + 12(grade C)	5 + 12(grade B)
Apex offset [µm]	0 + 50(grade D)	0 + 30(grade C)	0 + 50(grade C)	0 + 50(grade B)	0 + 50(grade C)	0 + 50(grade B)
Maximum angle error [°]	0,6 (grade D)	0,3 (grade C)	0,3 (grade C)	0,2 (grade B)	0,3 (grade C)	0,2 (grade B)
Fiber height [nm]	-100+A**(grade D)	-100+A**(grade C)	-100+A**(grade C)	-60+A**(grade B)	-100+A**(grade C)	-60+A**(grade B)

* negative value indicates the extension of a fibre

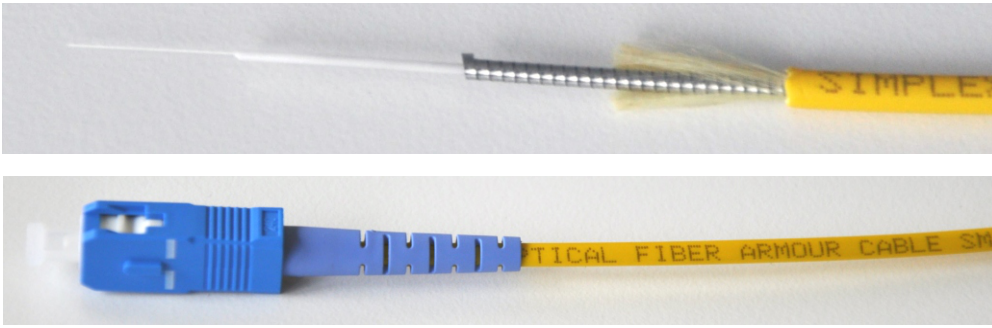
** calculated from the formula based on other geometric parameters, see technical requirements at www.dllpartners.de (or www.dll.com.pl)

*** possibility to order connectors of different parameters, according to the standards of the customer

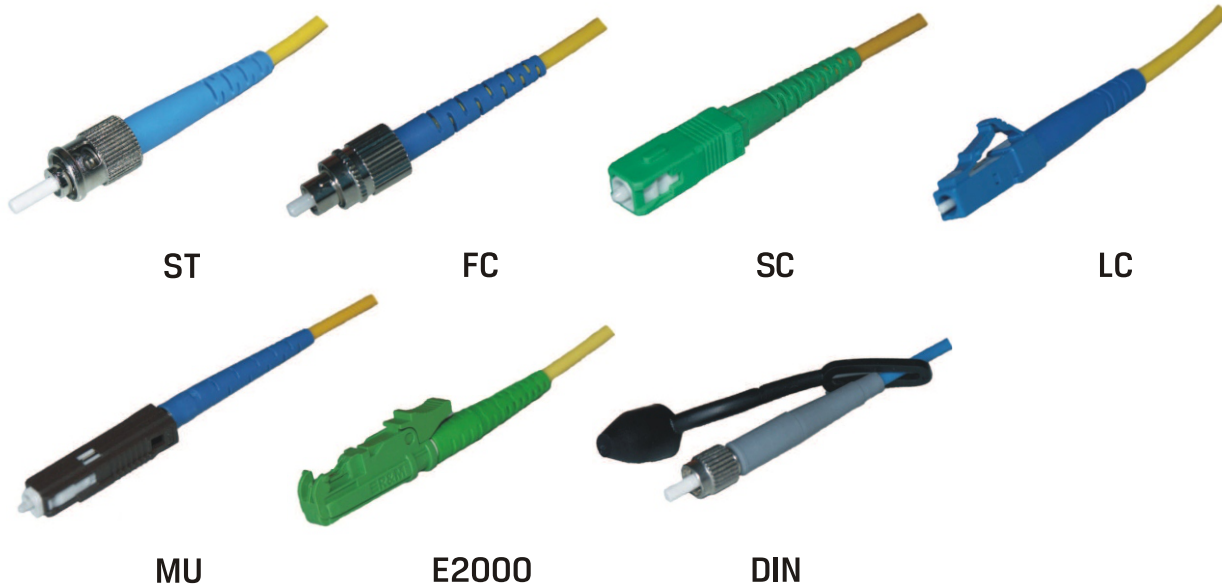
Cable Construction



Photos



Types of connectors



How to order

FIG.Z						
Cable type: S=Simplex D=Duplex	Cable diameter: 20=2,0 mm 30=3,0 mm X=Other	Core type: S2=SM G.652D S7=SM G657a B3=SM G657.B3 M1=MM 62 OM1 M2=MM 50 OM2 M3=MM 50 OM3 M4=MM 50 OM4	Connector: S=SC T=ST F=FC L=LC E=E2000 M=MU D=DIN	Polishing standards: F=Flat P=PC U=UPC A8=APC 8° A9=APC 9°	Length: 0010=1 m 0020=2 m : 0100=10 m :	

PAT.Z							
Cable type: S=Simplex D=Duplex	RCable diameter: 20=2,0 mm 30=3,0 mm X=Other	Core type: S2=SM G.652D S7=SM G657a B3=SM G657.B3 M1=MM 62 OM1 M2=MM 50 OM2 M3=MM 50 OM3 M4=MM 50 OM4	Connector A: S=SC T=ST F=FC L=LC E=E2000 M=MU D=DIN	Polishing standards A: F=Flat P=PC U=UPC A8=APC 8° A9=APC 9°	Connector B: S=SC T=ST F=FC L=LC E=E2000 M=MU D=DIN	Polishing standards B: F=Flat P=PC U=UPC A8=APC 8° A9=APC 9°	Length: 0010=1 m : 0020=2 m : 0100=10 m :

*In order to order a Pigtail/Patchcord Premium one has to use the catalogue code FIG.Z.P or PAT.Z.P

Information

- >> Product packed in a bag.
- >> Each product is accompanied by a measurement protocol,
- >> Ferrule secured cover.